



a xylem brand



Parameters:

Dissolved Oxygen (optical)  
Temperature

Applications:

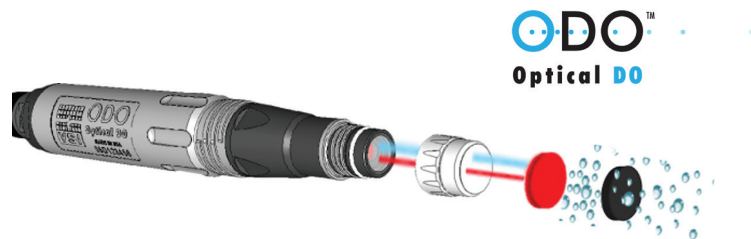
- Recirculating systems
- Raceways
- Ponds
- Sea cages
- Live haul
- Aquariums
- Research
- Tanks

### YSI Optical Dissolved Oxygen & Temperature Sensor for aquaculture continuous monitoring and control

Engineered specifically for aquaculture applications, the optical dissolved oxygen sensor can be used with the 5500D MultiDO monitor for process control to ensure adequate oxygen levels for your livestock or for improved energy efficiency. With YSI's ODO<sup>®</sup> optical dissolved oxygen technology you'll benefit from reduced costs, less maintenance and better data. *The ODO sensors require no membrane changes, no electrode cleaning, no stirring for accurate data and less frequent calibrations.*

You can also incorporate the DO sensor directly with your PLC via the RS485 communication. Additional inputs for barometric pressure and salinity are used to accurately calculate the DO % and mg/L.

- Non-consumptive luminescent method eliminates stirring
- No warm-up time required
- Smart sensor retains calibration in the probe
- Compatible with 5500D MultiDO monitor and the IOEM and REM expansion modules
- User-replaceable, low maintenance DO cap with +1 year life
- Tank-side calibration when used with the YSI 5500D monitor
- Ability to connect to PLC
- Communication via RS485
- 2-year cable and probe warranty



With optical DO, oxygen is constantly diffusing through the sensing cap affecting the luminescence of the sensing layer. The lifetime of the luminescence is measured by the sensor and compared against a reference.

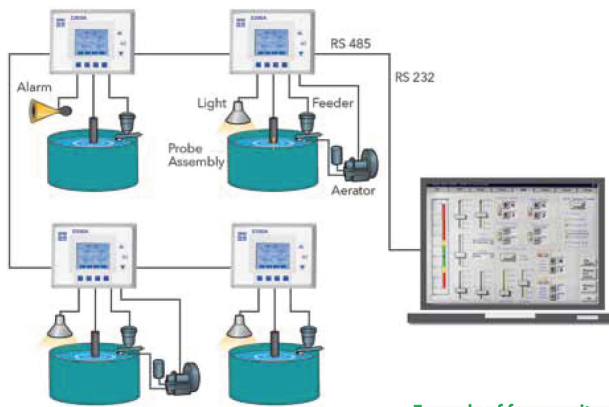


## YSI Optical Dissolved Oxygen and Temperature Sensor Specifications

Dissolved Oxygen (% saturation)	Range	0 to 500% air saturation
	Accuracy	0 to 200% air saturation $\pm 1\%$ of the reading or $\pm 1\%$ air saturation, whichever is greater; 200 to 500% air saturation $\pm 10\%$ of the reading
	Resolution	0.1% air saturation
Dissolved Oxygen (mg/L)	Range	0 to 50 mg/L
	Accuracy	0 to 20 mg/L $\pm 0.1$ mg/L or $\pm 1\%$ of reading, whichever is greater; 20 to 50 mg/L $\pm 10\%$ of the reading
	Resolution	0.01 or 0.1 mg/L (auto scaling)
Temperature (°C, °F, °K)	Range	-5 to 70 °C (23 to 158 °F)
	Accuracy	$\pm 0.2$ °C
	Resolution	0.1 °C
Response time	90% of reading in 25 seconds; 95% of reading in 45 seconds (typical response times with no stirring; sample movement will improve typical response times)	
Communication Protocol	RS485, proprietary communication (NDA required)	
Warranty	2-years cable and probe; 1-year sensor cap (actual sensor cap life may be longer)	
Certifications/ Compliance	CE, RoHS, WEEE, C-Tick, VCCI, IP-67, Made in USA	
Storage Temperature	-20 to 70 °C (-4 to 158 °F)	
Power Requirements	6.3 VDC at 10-20 mA	
Dimensions (sensor)	Length: 19 cm (7.5 in); Diameter 2.4 cm (0.95 in)	
Material	Xenoy® PBT Polycarbonate blend, Noryl, Stainless Steel, Titanium, Polyurethane, Santoprene, Acrylic, Polystyrene	

## YSI Optical Dissolved Oxygen and Temperature Sensor Ordering Information (order items separately)

626320	Sensor cap (included with initial probe purchase)
626200-4	4-meter cable with optical DO probe
626200-10	10-meter cable with optical DO probe
626200-20	20-meter cable with optical DO probe
626200-30	30-meter cable with optical DO probe
626200-40	40-meter cable with optical DO probe
626200-50	50-meter cable with optical DO probe
626200-60	60-meter cable with optical DO probe
626200-100	100-meter cable with optical DO probe



Example of four monitors individually monitoring and controlling four tanks on the same network.

**Example of four monitors individually monitoring and controlling four tanks on the same network.**

### YSI

1725 Brannum Lane, Yellow Springs, OH 45387  
Tel +1 937.767.7241 800.897.4151 (US)  
info@ysi.com  
YSI.com

YSI is a registered trademark.  
Specifications are subject to change. Please visit YSI.com to verify all specs.  
©2016 YSI

Printed in the USA. W54 June, 2016



a xylem brand